

Swimming Pool Permit Application

Location: _____

Date: _____

Use the sketch on page one (1) to indicate the following information:

1. Distance to the lot lines, street and house
 2. Location of overhead or below grade utilities
 3. Location of safety barrier
 4. Location of gate in safety barrier
 5. Location of ladder – minimum of one means of egress ladder per pool
 6. Location of utility and drainage easements
 7. Location of pump and convenience outlets (see examples) - indicate distances
 8. Location of light fixtures and switches
 9. Locations of pool deck if applicable (Note: a pool deck will require additional construction details – including dimensions, type of lumber, guards and steps):
 10. Type of pool drainage system and area of drainage
-

ADDITIONAL REQUIRED INFORMATION

1. Method of filling or topping off pool
A vacuum breaker shall be provided on a threaded hose outlet _____
2. Size – Flow rate of pump _____ (water turnover required once every 12 hours)
Gallons in pool / flow of pump less than 12
3. Provide catalog cuts and installation instructions for pumps filter and all circulation equipment.
4. Type, quantity and method of storage for pool chemicals.
5. Type of ladder – ladder shall be able to be removed, secured, locked or provided with an approved safety barrier and gate. A removable ladder is not an acceptable safety barrier.
6. Steps shall be slip resistant – handrails on both sides.
7. Special lot or site conditions.
8. Zoning restrictions or variances.
9. The water velocity in the return line shall not exceed 8 feet per second.

Swimming Pool Permit Application

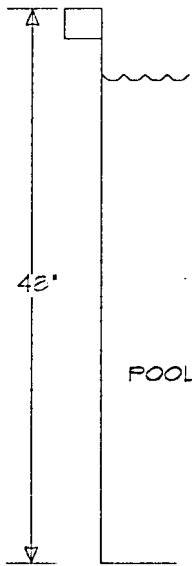
Location: _____

Date: _____

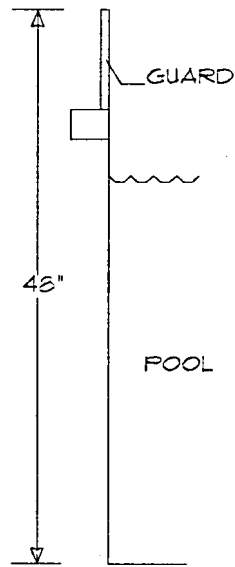
APPROVED SAFETY BARRIERS

Side of the pool can be used as the safety barrier or other approved methods:

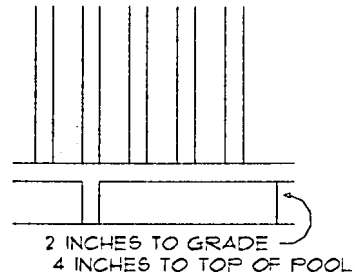
SIDE OF POOL



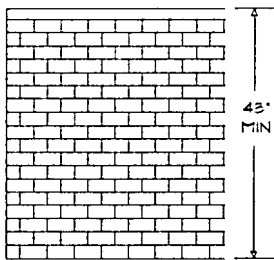
SIDE OF POOL WITH BARRIER



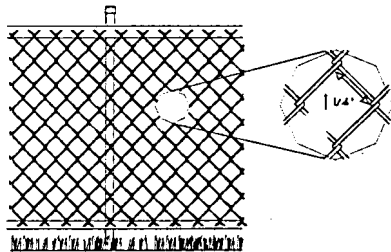
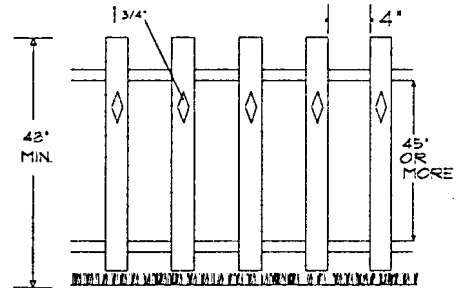
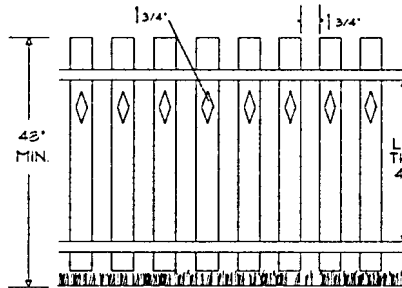
BOTTOM CLEARANCE



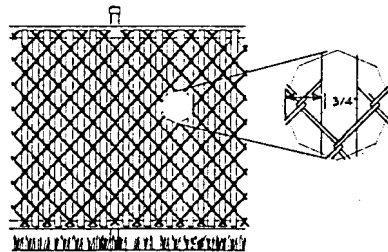
BARRIER OPENINGS



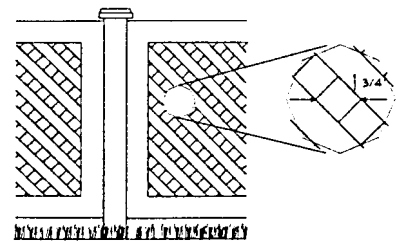
BRICK
NO INDENTATIONS OR PROJECTIONS



CHAIN LINK FENCE



CHAIN LINK FENCE WITH SLATES



LATTICE WORK

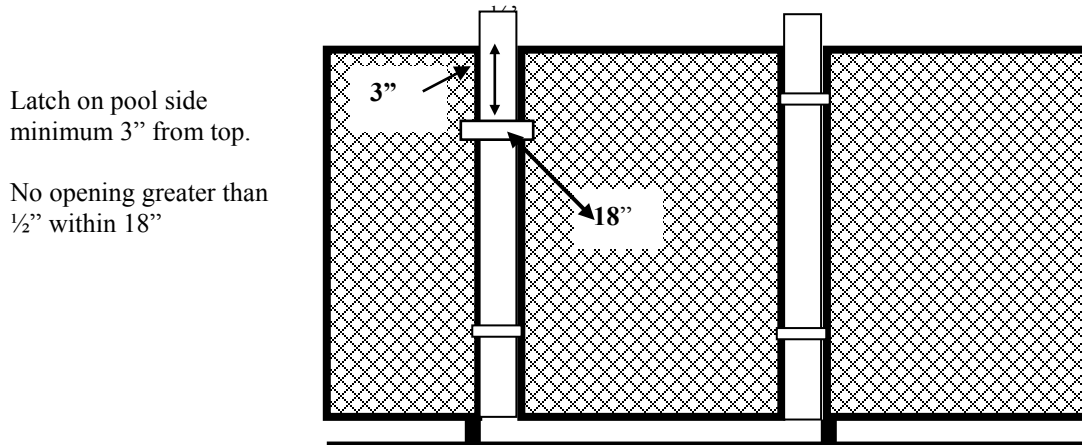
Swimming Pool Permit Application

Location: _____

Date: _____

Pedestrian Gates – Swing open from pool, self-closing, self-locking, same construction requirements as the safety barriers and equipped to accommodate a locking device.

Gates are required to be self closing and latching with the release mechanism a minimum of 54 inches above grade or located on the pool side of the gate.



House wall used as part of the Safety Barrier

1. A side of the house used for the safety barrier with a door, with direct access to the pool shall have an audible alarm on the door or a power safety cover.

Alarm – commence within 7 seconds of opening door – sound for 30 seconds 85 dBA at 10 feet, distinctive sound, automatically reset, deactivation touch pads 54 inches above thresholds for a single opening allowed.
2. Doors opening onto the pool area – self-closing, self-latching, release 54 inches above the floor, swing away from pool area.
3. A deck which opens on to the pool will require a safety barrier from the deck or the deck shall comply with the safety barrier requirements including stairs and gates.
4. A deck which opens on to the pool and on the house which provides direct access from the door to the pool shall have alarms on the doors or a power safety cover.
5. Ladders and steps that provide access to the pool are required to be surrounded by a barrier as required above.

Swimming Pool Permit Application

Location: _____

Date: _____

ELECTRICAL REQUIREMENTS

Permanent Pools – Pools with a depth greater than 42 inches or which are not taken down and stored over the winter.

Storable Pools – Pools with a maximum depth of 42 inches or which are taken down over the winter.

1. Type and size conduit and conductor for electric supply for pump or outlet.
Conductor _____ Conduit _____
2. Type of light fixture, switches and receptacles
3. Permanent Pools – maximum length of pump cord is 3 feet.
4. Ground for receptacles – minimum #12, protected and connected to the grounding terminal bus of service panel or sub-panel.
5. Conduit underground shall have fittings for frost movement.
6. Underground cable shall have an “S” loop at the transition point to conduit.

