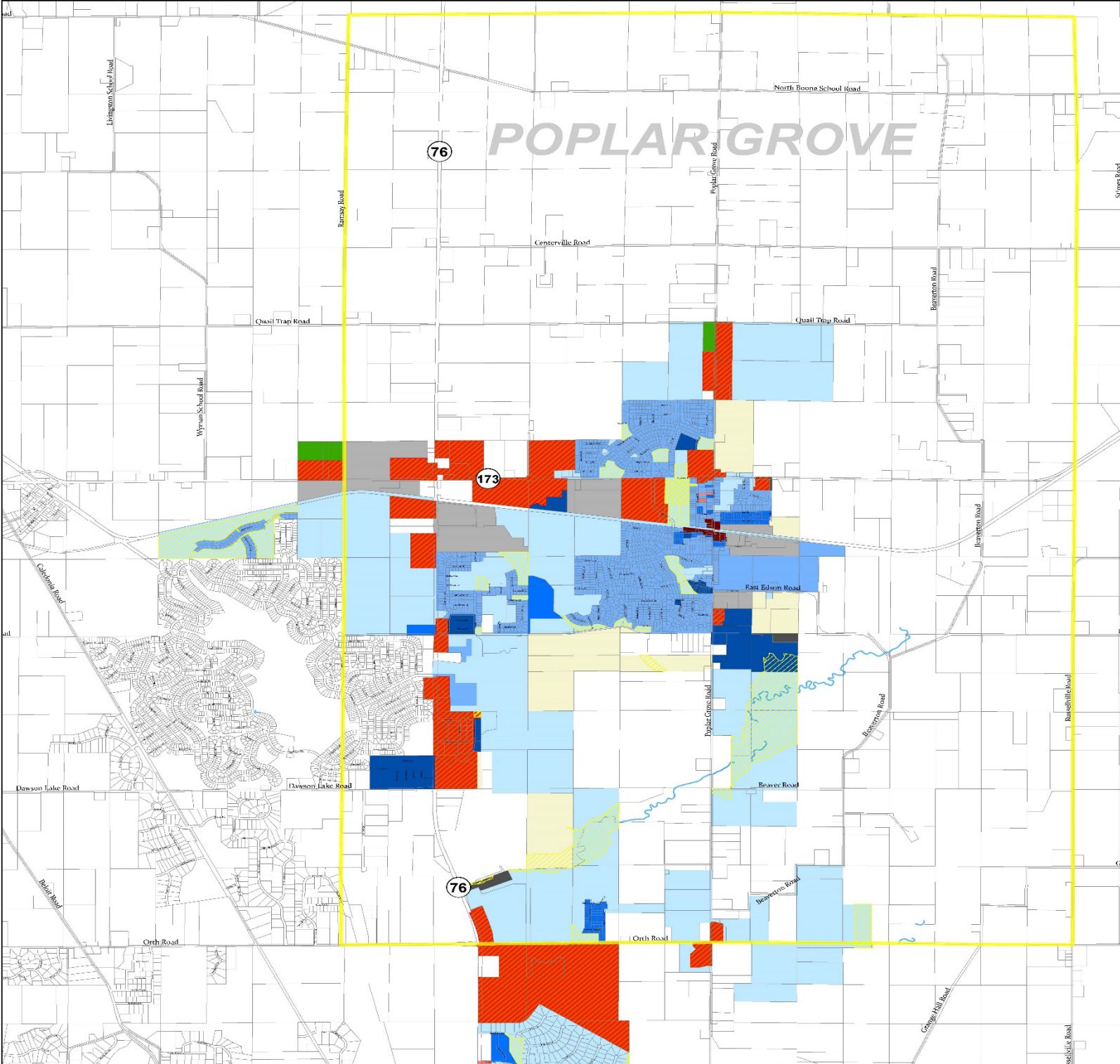


Poplar Grove Zoning District Map



Poplar Grove Zoning

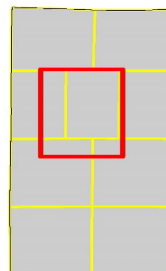
- A-1 Agricultural/Rural District(40 ac)
- RE Residential Estate District (10 ac)
- R-1 Single Family Residential 1 District (20,000 ft²)
- R-2 Single Family Residential 2 District (10,000 ft²)
- R-3 Single Family Residential 3 District (7,000 ft²)
- R-5 Mixed Residential District (3,000 ft²)
- CB Central Business District
- GB General Business District
- NB Neighborhood Business District
- LI Light Industrial District
- HI Heavy Industrial District
- Greenspace
- Municipal Boundary

0 10 20 30 40 Feet


Owen Costanza
Village President


Karri Anderberg
Village Clerk

April, 2021
Approval Date



Revisions

03-12-2012	03-10-2014	12-08-2014	04-13-2015	07-13-2015
02-2017	02-2018	02-2019	03-2020	03-2021

This map is the Zoning District Map referred to in Title 8 Zoning Chapter 6 of the Poplar Grove Zoning Code. This map is a general representation of approved zoning districts and is subject to change on a regular basis upon action of the Poplar Grove Board. Exact descriptions and boundaries of the represented zoning districts are on file in the Belvidere - Boone County/Poplar Grove Planning Department 401 Whitney Blvd, Belvidere, IL 61008. Prepared by the Boone County GIS Department 11-01-2021